

## 2025 BADLANDS QUILTERS RETREAT

# HOCUS POCUS



**National Teacher: Lindlee Smith**

Local Teachers: Denise Fried, Kerry Thompson, Kathy Johnson, Carla Fettig, Teresa Hecker, Kristie Jacobson, Vickie Loh

**OCTOBER 10th, 11th, 12th, 2025**

## REGISTRATION INFORMATION

The Badlands Quilters Guild welcomes you to our 33rd retreat. The 2025 retreat offers many different classes with varied projects and difficulty levels. Hopefully you will find several that interest you. There is also a free sewing area where you are able to continue work on a class project, prep for a class or work on whatever you like!

The Retreat will include all day Friday, Saturday and Sunday. Friday's noon meal will be included in the Retreat package.

## REGISTRATION DEADLINES:

**MEMBER** registration begins on July 1. (Dues must be paid by March 31<sup>st</sup> to register as a member) Classes will be filled on a first come basis.

**NON Members** can start registration after August 1st.

Please be sure to indicate a second choice for each time slot in case your first choice for a class is full or canceled. THE BEST WAY TO INSURE YOUR CHOICE OF CLASSES IS TO REGISTER BEFORE THE SEPTEMBER 1st CANCELLATION DATE!!

**CANCELLATION POLICY & CLASS CHANGES**-BQG reserves the right to cancel classes that do not meet the minimum class size. In the event that a class must be canceled, notification will be made once the retreat committee meets after the September 1<sup>st</sup> deadline. As registrations are received, a notice will be posted on the Badlands Quilters Guild Facebook page when a class has been cancelled due to insufficient number of participants. After the classes offered are finalized, you will be notified by email a list of your classes. It is suggested that you refrain from purchasing class supplies until you know the class will be offered. Last minute registrations are welcomed, but acceptance will be based on class availability. A class may be full or require a kit or pattern not available on short notice. Please call, text or email last minute requests to: Denise Fried at [dktgltquilting@gmail.com](mailto:dktgltquilting@gmail.com), 701-595-3024.

**REFUND POLICY:** Refunds will only be given in case of bad weather, illness or death. Fixed costs will not be refunded. The Retreat Committee has the final say on refunds.

**MOTEL RESERVATIONS-** A block of rooms has been reserved for retreat participants at a special rate of \$99.00 Double Queen per room per night at the AmericInn. Please contact the AmericInn at the local number (701-623-4800) for reservations. Please request special quilter's rate. There is a 48 hour cancellation policy: A cancellation fee will be applied if 48 hour notice is not given in advance. All unreserved rooms will be released 1 month prior to arrival date. 25 rooms have been contracted at the Badlands Motel. Cost will be \$139.30 plus tax. Please use this link to book your rooms online.

<https://bookings.medora.com/rates-room1?city=11&hotel=62701&arrival=2025-10-09&departure=2025-10-12&rooms=1&adults%5B1%5D=1&children%5B1%5D=0&adults%5B2%5D=1&children%5B2%5D=0&adults%5B3%5D=1&children%5B3%5D=0&adults%5B4%5D=1&children%5B4%5D=0&adults%5B5%5D=1&children%5B5%5D=0&codeType=block&code=BADLANDSQUILT100925>

Reservations can also be made at the Roughrider Hotel by calling the local number (701-623-4444). A block of rooms have NOT been reserved at the Roughrider Hotel.

**SHOW AND TELL-** Show and Tell will be held as part of the Friday evening activities. Be sure to bring a couple of your favorite projects from the past years to share. Class show and tell will be held during the Sunday noon meal.

**JOIN THE BQG-**The Badlands Quilters Guild was formed in 1993 to promote the art of quilt making and to preserve our quilting heritage. Today the group includes over 100 members from western North Dakota and eastern Montana striving to improve their skills, while enjoying the company of our fellow quilters. The guild meets four times a year, Retreat, January Sleepover, Spring Sleepover, and Summer Sew In. Check our facebook page for more information on these events. Newsletters will be sent out during the year. To join BQG, send a check for \$20 to Teresa Hecker, 10870 35<sup>th</sup> St SW, Dickinson, ND 58601. Phone - 701-483-4952. Email – [whitetailranch@ndsupernet.com](mailto:whitetailranch@ndsupernet.com). (dues must be paid by March 31st<sup>s</sup> to attend retreat as a member)

**RETREAT MEALS-**Four Corners of Fairfield will be our caterer this year. Friday lunch and dinner, Saturday lunch and dinner, and Sunday lunch are included with your retreat registration. Additional meals may be purchased in advance for guests. Please remember choices for eating in Medora are limited after Labor Day.

**VENDOR-**The Bakery Fabrics from Belle Fouché, SD

**OUR FAMOUS HOSPITALITY/GOODIES TABLE-**This is a GREAT place for guild members to catch up with old or new friends and grab a quick refresher so you have the energy to get lots of quilting done. Members are asked to bring something to share at the hospitality table throughout the retreat. Coffee, tea, hot chocolate and water will be available.

**\*OPEN SEWING-**The open sewing will be back in the Community Center this year.

**\*CHALLENGE BLOCKS-**

**BOOKS, PATTERNS, KITS-**Book, pattern and kit fees are payable to the teachers at the beginning of the class. Be sure to contact local teachers or retreat chair prior to the retreat to reserve what you need, or if you need assistance.

**PRE-CLASS CUTTING AND SEWING INSTRUCTIONS-** For pre-class cutting and preparation, check under class description. Some classes will have links on the website for added information. The website is [www.badlandsquilters.com](http://www.badlandsquilters.com). You should receive your confirmation notice shortly after the September 1st class cancellation date. Please remember that BQG reserves the right to cancel classes that do not meet the minimum class size. In the event that a class must be canceled, notification will be made soon after September 1st. Therefore, it is suggested that you refrain from purchasing class supplies until you are sure the class will be offered.

**RETREAT THEME-** HOCUS POCUS Dress up for the Saturday night banquet if you like.

**SATURDAY NIGHT:** There will be activities after the Trunk Show. Be sure join us in the Dining area.

**Thursday Night Show:** See info on the last page of the brochure

*Please make sure your sewing machine is in good running order and you may want to bring your owner's manual.*

2025Badlands Quilters Retreat Class Schedule

Friday All Day – Oct. 10, 2025      9:00 am - 12:00 noon & 1:00 pm - 4:00 pm

Wild Homestead Star – Lindlee Smith Day 1

Atomic Starburst – Kathy Johnson

Hollow Star – Kris Jacobson

Fractured Rings – Carla Fettig

Friday Evening – Oct. 10, 2025      6:30 pm - 9:30 pm

Mystery Quilt – Kathy Johnson

Disappearing Act – Kerry Thompson

Hemingway Pouch – Denise Fried

Saturday All Day – Oct. 11, 2025      8:30 am - 11:30 am & 1:00 pm - 4:00 pm

Wild Homestead Star – Lindlee Smith – Day 2

Mirage – Kathy Johnson

Simply Woven – Kris Jacobson

Tripping Out - Denise Fried

Dutch Tulip - Teresa Hecker

Sunday All Day – Oct 12, 2025      8:30 am - 11:30 am & 1:00 pm - 4:00 pm

Steppe Star – Lindlee Smith

Bargello Pinwheel – Denise Fried

Double Rings – Teresa Hecker

Harmony – Vickie Loh

New Twist on an Old Pleat – Kerry Thompson

Show and Tell Friday Night

Lecture Saturday Night

Class show and Tell noon Sunday



## **All Day Friday Classes**

**9:00 am-12:00 noon & 1:00 pm – 4:00 pm**

### **Wild Homestead Star – Lindlee Smith - Day 1**

**Skill Level: Advanced Beginner**



I designed this pattern as a unique, scrap-busting quilt. This pattern uses foundation fabric so you can use the small and/or odd-shaped scraps you've been holding onto. Includes instructions for Baby, Throw, and Bed sizes as square sizes, as well as instructions and fabric requirements to add optional borders.

Baby (43" x 43" *or* 43" x 52")

Throw (60" x 60" *or* 60" x 70")

Bed (80" x 80" *or* 80" x 105")

There are no Y seams in this quilt pattern.

#### **General Supplies:**

Sewing machine

Basic Sewing Supplies

Rotary cutting Supplies

Rulers - I recommend a 8.5" x 24.5" (or similar) and a smaller ruler about 2.5" x 12.5" (or similar)

#### **Wild Homestead Star Pattern**

A variety of fabrics for the diamonds (approximate yardage in pattern) in any size or shape. Odd-shaped and small pieces can be used for this pattern.

Background fabric

Paper templates (from the pattern) or fabric to cut foundation fabric (I recommend a light muslin),

yardage in pattern

Optional: seam roller

Recommended: starch

### **Atomic Starburst – Kathy Johnson**

66 x 73

The Atomic Starburst Quilt is made by combining foundation paper pieced Starburst blocks with traditional piecing for a vibrant, mid-century modern quilt

#### **Supplies:**

Sewing Machine - an open toe foot is helpful for paper piecing

Rotary Equipment

General Sewing Supplies

Creative Grids 60° Diamond Ruler or use the template in pattern

Continued on the next page



## Atomic Starburst – Kathy Johnson continued



Pattern - Atomic Starburst Quilt

Foundation Paper Piecing paper

Fabric:

Starbursts – (20) 6" X 8" rectangles

Diamonds – (30) 7" X 12" rectangles or (30) 10" squares (layer cake)

Background – 5 yards

Binding – 5/8 yard

Before Class:

Scan and print several of the starburst paper piecing patterns. There are several paper foundations pattern papers available.

Regular copy paper is much harder to tear off so does not work well. I bought plain newsprint on Amazon for mine

## Hollow Star – Kris Jacobson

81" x 84"



This is Krista Moser's Hollow Star done in Christmas blues. This quilt will look great in any color scheme. There are no inset seams in this pattern so it is easy to sew and fun to make.

### Supplies:

Krista Moser's Pattern Hollow Star (Make sure you have the newer pattern with the Quilt in red, white and blue)

Large Non Slip 60 Degree Diamond Ruler by Krista Moser

Rotary cutting Supplies

Basic sewing Supplies

Sewing Machine

Fabric: As stated in the Pattern. (My Quilt was done in a variety of blues.)

## **Hollow Star – Kris Jacobson - continued**

Cutting instructions: You can cut your strips before class. We will go over cutting with the ruler in class.

Cut strips the width of fabric.

Assorted red strips: 13 – 4 ½" wide strips

Assorted blue strips: 13 – 4 ½" wide strips

Assorted gray fabrics: 6 – 4 ½" wide strips

**Or** 32- 4 ½" Strips in colors of your choice

Background Fabric: 10- 4 ½" wide strips and 10 – 8 ½" wide strips

## **Fractured Rings – Carla Fettig**



### **Improv Quarter Circles with Inserts**

This class introduces improv quarter circle piecing techniques with various insert techniques.

Detailed handouts will provide step-by-step instructions for construction of the quarter circles and insert possibilities.

This improv approach eliminates the need for templates and pinning.

There isn't a pattern provided, instead quilters will create a collection of improv components or blocks. These components may become a wall hanging, a table runner, a panel for a bag, a pillow cover, or a quilt. A variety of layout options will be provided. Several completed examples will be shared.

### **FABRIC OPTIONS**

SOLIDS: 8-10 different solids (varied values) OR

PRINTS with SOLIDS: 5-6 prints with 4-

5 solids OR

PRINTS: 5 busy prints with 4-5 tone on tone prints which read as solids





Solids with a black/white print  
(10" squares cut from yardage)



Prints with grunge and solids  
(Layer cake, along with 10" squares of grunges and solids)



Solids  
(10" squares cut from yardage)



Batiks  
(10" squares cut from yardage)

FABRIC NEEDED ----- 10" squares or yardage from which 10" squares may be cut.

- Twenty – twenty five 10" squares -- Cut two 10" squares from each color. Bring additional fabric of each color for additional 10" square and inserts. (A layer cake or partial layer cake would be a good beginning palette.)

TOOLS:

- 1) Rotary cutter with SHARP blade and mat
- 2) 12"x12" or 12.5"x 12.5" square ruler, along with another ruler you prefer for cutting strips

Any questions please email Carla Fettig at [Cfettig1120@gmail.com](mailto:Cfettig1120@gmail.com)

\*\* A variety of layouts for table runners, wall hangings or quilts will be provided in class.



**2025 Mystery – Kathy Johnson**

84" x 96"

**Supplies needed:**

Sewing Machine

General Sewing Supplies

Rotary Equipment

Stripology Ruler would be handy but not necessary

**Fabric:**

Main Focus Fabric – 2  $\frac{5}{8}$  yards

2 – Medium Coordinating Fabrics –  $\frac{3}{4}$  yard

Dark fabric –  $\frac{1}{2}$  yard

Light fabric – 2 yards

Border – 1  $\frac{5}{8}$  yard

**Cutting and sewing before class**

Cut

Main Focus Fabric - cut 84 – 4  $\frac{1}{2}$ " X 8  $\frac{1}{2}$ " rectangles

From Each Medium Coordinating Fabric cut 3 – 4  $\frac{1}{2}$ " strips and 3 – 2  $\frac{1}{2}$ " strips

Dark Fabric – cut 6 – 2  $\frac{1}{2}$ " strips

Light Fabric – cut 84 – 2  $\frac{1}{2}$ " X 12  $\frac{1}{2}$ " squares

Sew

Make 3 strip sets of each Medium Coordinating Fabric: these should measure 8  $\frac{1}{2}$ " when sewn together.

Sew a dark 2  $\frac{1}{2}$ " strip between a 4  $\frac{1}{2}$ " Coordinating fabric strip and the 2  $\frac{1}{2}$ " strip of the same color. Do the same with the other Coordinating fabric. Press these all to the dark fabric.

I used several large fall prints as the main focus fabric. As long as you have pairs of rectangles it will work with several focus fabrics. I was trying to use up scraps. Fat Quarters will also work if you want a variety of Main Focus prints. A layer cake would also work, you could get 2 – 4  $\frac{1}{2}$ " X 8  $\frac{1}{2}$ " rectangles from each square. I think large florals, Kaffe Fassett fabrics, Tim Holtz fabrics or Christmas fabrics would all work great.



## Disappearing Act – Kerry Thompson



Quilting is really just a bunch of Hocus Pocus! In this class we will make a set of simple quilt blocks disappear. Be amazed as hourglass blocks are cut up and sewn back together into entirely different shapes. We will work on techniques for sewing fabric on the bias and piecing precision. Your finished block can be made into a pillow cover, table topper, or, make more blocks for a larger quilt.

Handout fee: \$2

**Supplies:** Basic Sewing Kit, Rotary Cutter, 18.5" in length ruler

**Fabric:**

16 – 5" or 10" squares of scrappy or coordinated fabrics

The sample in the photo is made from 2 sets of 8 coordinating fabric squares.

## Hemingway Pouch – Denise Fried



The Hemingway Pouch comes with four size options: perfect for fitting everything from eye glasses to iPads. It's a fast and easy pattern with a unique diagonal zipper that really elevates the look!

**Materials Needed for Class**

You will need the *Heminway Pouch pattern* from [www.centerstreetquilts.myshopify.com](http://www.centerstreetquilts.myshopify.com)

Basic sewing Supplies

Basic Rotary cutting Supplies

Sewing machine

If you have any questions, please call, text or email at:

Denise Fried

701-595-3024

[dktqltrquilting@gmail.com](mailto:dktqltrquilting@gmail.com)

Continued on next page

## Hemingway Pouch – Denise Fried continued

### Fabric Needed

	Small	Medium	Large	Extra Large
Approximate size of flat item that will fit inside *	Up to 3 x 7" (Pencils, Eyeglasses, Rotary Cutter)	Up to 6 x 7" (E-reader / Kindle or small book)	Up to 8 x 10 (Tablet, Standard iPad, Book Sleeve)	Up to 10 x 11" (Large Tablet or iPad, Paper Notebook)
Main Fabric	Fat Quarter	Fat Quarter	Fat Quarter	2/3 yard
Lining Fabric	Fat Quarter	Fat Quarter	Fat Quarter	2/3 yard
Accent Fabric	Fat Eighth or 1/8 yard	Fat Eighth or 1/8 yard	1/4 yard	1/4 yard
Foam Stabilizer (such as Soft and Stable) or Batting	10" x 12"	16" x 13"	21" x 18"	25" x 20"
	4" x 8"	7" x 8 1/2"	9" x 12"	11" x 13"

### Prep Prior to Class:

Prepare quilted panels. Layer the lining fabric right side down, foam stabilizer or batting, and the main fabric piece right side up. Baste the three layers together using desired basting method. Quilt the layers as desired. We will cut the quilted panels in class.

### Saturday All Day Classes

**8:30 am -11:30 am & 1:00 pm – 4:00 pm**

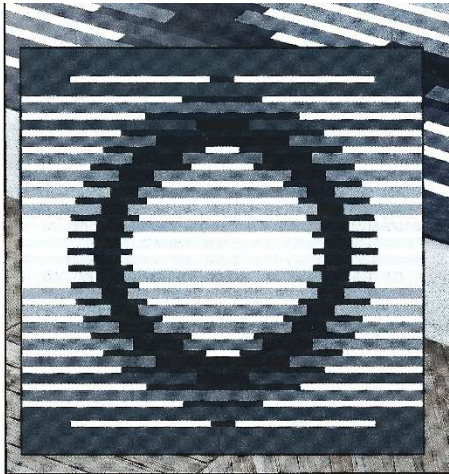
### **Wild Homestead Star – Lindlee Smith – Day 2**

Class information is on Day 1

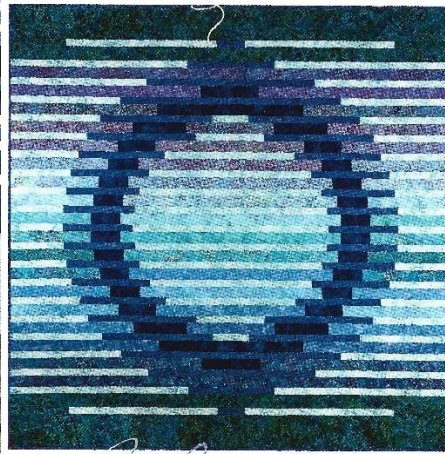




## Mirage – Kathy Johnson



Cool Grays



Blues

Rainbow

(Three examples of color choices)



### Supplies:

Sewing Machine

Rotary Equipment

General Sewing Supplies

Pencil

Pattern – Mirage

### Fabrics:

Option 1: Choose 2 identical strip rolls (like jelly rolls or Bali Pops). You won't be using all of the strips, but look for packages that have a good flow from strip to strip. This will be explained more thoroughly in the directions. Do

not pre-wash your pre-cut strips. Or they will be unusable.

Option 2:  $\frac{1}{4}$  yard cuts (not fat quarters) of at least 18 fabrics. I recommend having extras so you can choose the 18 that have the best flow from top to bottom.

Top and Bottom Borders  $1 \frac{3}{8}$  yard for borders cut widthwise with a center seam. If you fabric looks better lengthwise with no center seam –  $2 \frac{1}{2}$  yards

Wide Ring:  $\frac{2}{3}$  yard

Thin Ring:  $1 \frac{1}{8}$  yards

\*Thin Outer Border:  $1 \frac{1}{8}$  yards

\*Thin Inner Background:  $\frac{2}{3}$  yards

\* You can use just one fabric for both backgrounds – 2 yards total

Binding:  $\frac{3}{4}$  yards

Backing:  $7 \frac{2}{3}$  yards

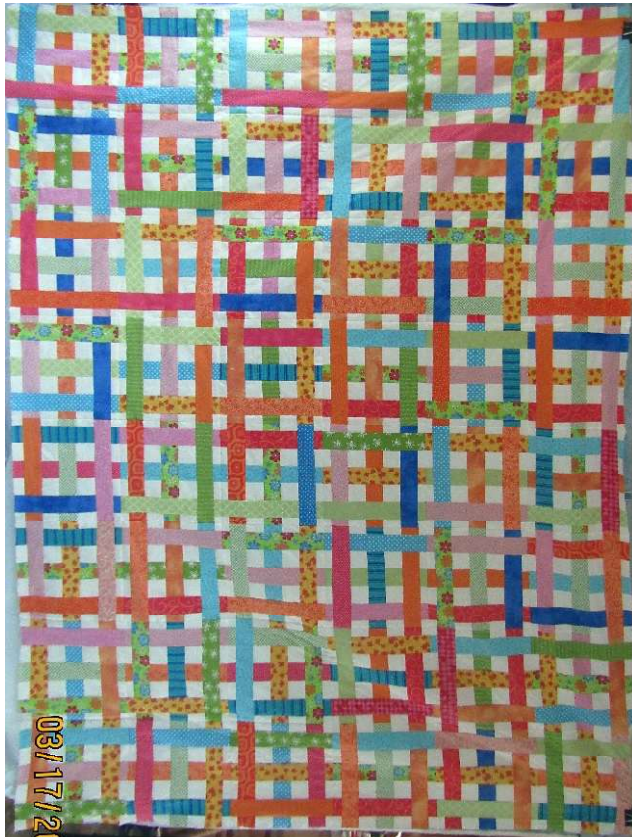
Before Class:

It will be important to get your pattern early so you can start deciding which version you are doing and start looking for your fabrics. All three colorways of the fabrics are included in the pattern.

## Simply Woven – Kris Jacobson

72 x 96

Skill Level: Intermediate



Here is a free pattern by Jessica Kelly. Make this quilt with strips from your stash or with jelly rolls. This size of quilt requires 2 jelly rolls but a throw size quilt can be made with one jelly roll. There will be a \$10 fee for the hand out.

### Fabric

2 Jelly Rolls containing at least 40 strips each-

2 3/8" yard Bella Solid- white

3/4 yard of any print for binding

5 3/4 yards total fabric for backing

78" x 102" batting

### Supplies:

General sewing supplies and Sewing Machine

Rotary Cutting Equipment

Pre Class Cutting instructions

1. Begin by unrolling your jelly roll strips, but leaving them folded in half, wrong sides together. Cut according to the directions below (it doesn't matter which colors you cut which size)

- From (24) strips cut: (2) 8" strips and (2) 12.5" strips to yield 48 of each size
- From (24) strips cut: (4) 9.5" strips to yield a total of 96
- From (32) strips cut: (3) 11" strips to yield a total of 96

From the white Bella solid cut:

- (10) 8" x WOF
- Subcut each 8" strip into (10) 4" x 8" Will yield a total of (100) 4" x 8" rectangles, you will need 96 of these

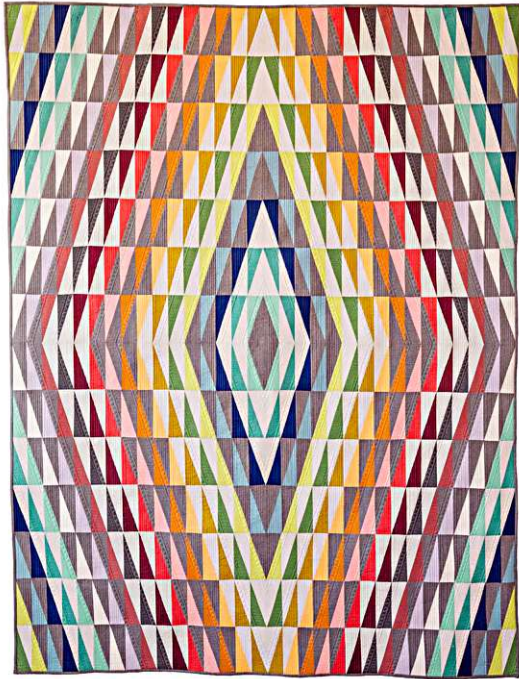
## Tripping Out – Denise Fried

Size 64" x 84"

A Fun modern quilt by Sew Kind of Wonderful using the Quick Straight Ruler. This is a fresh new look at the traditional Trip Around the World pattern made with rectangle HST blocks for a bold and groovy look!

The Quick Straight Ruler makes cutting angled shapes easy, quick, and consistent. The perfect tool for every quilter!

## Tripping Out – Denise Fried continued



### Materials Needed for Class

You will need the *Tripping Out pattern from Sew Kind of Wonderful and the Quick Straight Ruler.*

### Fabric

(16) ½ yard cuts assorted focus fabrics.

2 ½ yds light neutral background

2 ½ yds dark neutral background

Backing fabric (not needed for class)

2/3 yd binding fabric (not needed for class)

### Prep Prior to Class:

From each assorted ½ yd focus fabrics cut:

(2) 7" x wof strips, from strips cut (14) 4" x 7" rectangles

From each assorted 2 ½ yards background fabrics cut:

(12) 7" x wof strips, from strips cut (112) 4" x 7" rectangles

Basic Sewing Supplies, Rotary cutting equipment and Sewing Machine

If you have any questions, please call, text or email at:

Denise Fried

701-595-3024

## Dutch Tulip – Teresa Hecker

This is a fun little table runner or wall piece to learn beautiful turned edge invisible machine applique using a fusible applique paper. We'll use Becky Goldsmith's Dutch Tulip pattern from Piece 'O Cake which is a free download at <https://pieceocake.com> In addition to the turned edge applique, there will be demos for making circles as well as bias stems. (This runner is 12.5" x 27") There is a \$12 kit fee which will include instructions for making the table runner, a handout on the machine applique process, and applique paper pre-printed with the tulip pattern. There is no need to buy the stabilizer or download the above pattern unless you want to make the Piece 'O Cake project.

### Fabric and notions required:

Three 10" squares for applique blocks

Small pieces for the applique tulips, circles, leaves, and stems

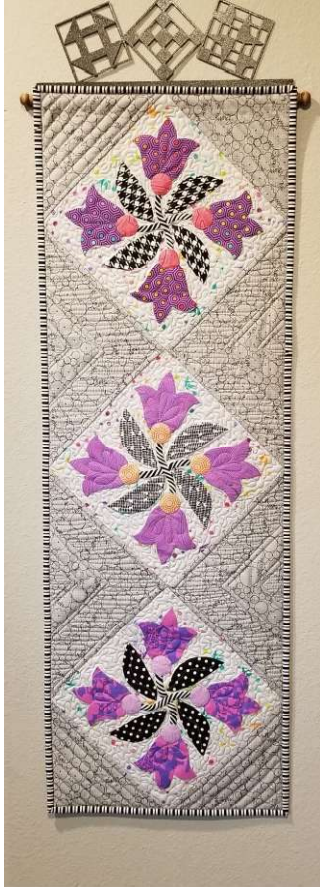
1/2 yd for setting triangles (not needed for class)

Invisible (monopoly) thread both smoke and clear (I use Superior but bring any)

A fine bobbin thread in a neutral color (I use Bottom Line from Superior)

Microtex 70 needles





Bring the usual sewing supplies including a washable glue stick, applique glue such as Sue Daley or Roxanne's, starch or sizing, marking tools both permanent and removable, and a good scissors. Karen K. Buckley's Large Micro-serrated Perfect Scissors Purple 7-3/4" are the best! You will need an open toe applique foot as well. You will need to know how to change your needle position and a knee lift is helpful.

Bring if you have but **don't buy**: Appliquick tools, KB Perfect Circles, Applipops, bias maker either 1/4" or 3/8" will work, and bias pressing bars. There will be a demo for KB Perfect stems. These will all be available to try so don't purchase if you don't have them. Any questions call or text 701-290-2723

## **Sunday All Day Classes**

**8:30 am -11:30 am & 1:00 pm – 4:00 pm**

### **Steppe Star – Lindlee Smith**

Crib or Throw size quilt

A Traditional Lone Star quilt pattern with options for your corner stars.

This pattern can be made with or without 4 different star block designs in the background.

Pictures are coming soon. The fabric list will be sent to you with registration.

#### **Supply List**

Lone Star Legacy by Lindlee Smith (publication date 9/25/25)

I will email Kathy when the book is available for pre-order. I will also bring books with me to the Retreat for purchase.

Fabric marking tool, such as the sewline mechanical pencil

Fabric requirements will be mailed to participants with the registration information.

Basic sewing equipment, Basic rotary cutting equipment, Sewing Machine

## Bargello Pinwheel – Denise Fried



Easy to make with two repeating blocks using strips. Uses 20 fat quarters. Will need two groups of 10 FQ from light to dark in each group. Block size 15" x 15". Quilt size 60" x 60".

### Materials Needed for Class

You will need the *Bargello Pinwheels quilt pattern* from [www.CastillejaCotton.com](http://www.CastillejaCotton.com). You will need to purchase and download your pattern.

1st color way - 10 FQ from light to dark. Number 1-10.

2nd colorway - 10 FQ from light to dark. Number 11-20.

Binding – 1/3 yd (not needed for class)

Backing – 4 yds (not needed for class)

### Prep Prior to Class:

1. Cut 8 – 2" strips from each of the 20 FQs for a total of 160 strips. Strips should be 2" x 20" approximately.
2. 1<sup>st</sup> colorway
  - a. Sew strips #1 to #10 on the long edges into a strip set. Press the seams towards strip #10. Make 4 strip sets. Label A.
  - b. Sew strips #1 to #10 on the long edges into a strip set. Press the seams toward strip #1. Make 4 strip sets. Label B.
3. 2<sup>nd</sup> color way
  - a. Sew strips #11 to #20 on the long edges into a strip set. Press the seams towards strip #20. Make 4 strip sets. Label C.
  - b. Sew strips #11 to #20 on the long edges into a strip set. Press the seams toward strip #11. Make 4 strip sets. Label D.
4. Sew all the strip sets into tubes by sewing strip #1 to #10 and #11 to #20. You will have 4 tubes of each A, B, C, D.

If you have any questions, please call, text or email at:  
Denise Fried, 701-595-3024, [dkqltrquilting@gmail.com](mailto:dkqltrquilting@gmail.com)



## Double Rings – Teresa Hecker



Dust off your Quick Curve Ruler and join in making this updated Double Rings pattern. You get the look of a double wedding ring without all the work. Sew Kind of Wonderful has made sewing curves both easy and forgiving. The Double Rings pattern is required along with the Quick Curve Ruler and the Sew Square 10 available at your local or online store. The pattern has multiple sizes.

### **Fabric Requirements (Throw 57"x76")**

(25) 5 inch wof assorted focus fabrics (the cover quilt uses 5 sets of assorted colors with 5 assorted focus fabrics in each color set).

\*See note below

(12) 1/3 yd cuts assorted background fabrics or 3 1/2 yds of a single background fabric

5 yds for backing

1/2 yd for binding

Quick Curve Ruler (SKW)

Sew Square 10 (SKW)

Bring your usual sewing and rotary supplies.

Make sure your rotary cutter is one that locks open. It needs to work with the slotted ruler. Ruler stickers are helpful-- either the GE Design brand or the basic office supply type work too. Starting with a new rotary blade will make the process more enjoyable. Precutting: Check your pattern for the green box "Sort and Cut Fabric" on page 1 and cut your fabrics accordingly.

\*Note: A jelly roll may be used in addition to 1 yard total of other focus fabric or (7) 5 inch wof strips. Do not cut into your jelly roll strips. If you have questions you may contact me at 701-290-2723.

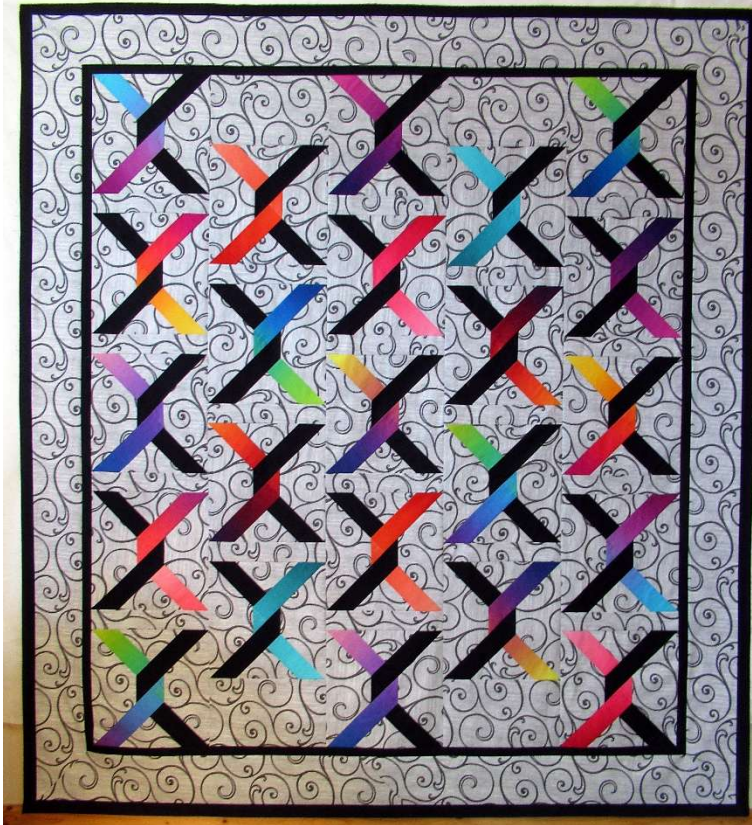
## Harmony – Vickie Loh

What do you get when you twist together two contrasting fabric strips and place them on a neutral background? HARMONY! You too can achieve harmony with a jelly roll plus a dark contrasting fabric. Or try a scrappy look using lots of colorful strips from your stash. This is a fun and easy pattern with lots of visual impact.

**Supply List** – Harmony pattern by GE Designs. It can be found on multiple websites. BSK (basic sewing kit), RCE (rotary cutting equipment), 12 1/2" square ruler, a walking foot may be helpful to prevent stretching when sewing on bias edges.



## Harmony – Vickie Loh Continued



**Fabric** – The pattern has 4 different quilt sizes to choose from. Select which size you prefer and cut fabric accordingly before coming to class. The lap quilt shown here has 23 twisted strips to form the X's. Each X uses  $\frac{1}{2}$  of a jelly roll strip for the light side and I used  $2\frac{1}{2}$ " strips of dark yardage for the darker side. From one jelly roll I had more than enough strips left over to make a scrappy binding. I also added optional narrow inner and outer borders from my dark fabric. This is not in the pattern, but I like the impact it has on my quilt. Please, be aware that the pattern is based on 42" width of usable fabric for the background.

This is with both selvages trimmed off. The lap quilt shown here

requires  $4\frac{1}{4}$  yards of background fabric. My fabric was not 42" wide, so I purchased 5 yards and had a little left over when I was done cutting.

## New Twist on an Old Pleat – Kerry Thompson

Who doesn't like a cute throw pillow? Twisted pleats give the front of this pillow dimension while the contrasting accent fabric lets those pleats pop! This project uses a quilt as you go type technique that is simple and fun. Finish your project as a pillow cover or as a wall hanging.

### Supplies:

Pattern, Basic Sewing Kit, Rotary Cutter, 18.5" in length ruler.

### Fabric:

For Pleats: Scraps or cuts of fabric to make 52 –  $1\frac{1}{2}$ " x 4" rectangles

Backing Fabric:  $\frac{2}{3}$  yard or two 18" x 13" rectangles

Background/Accent Fabric:  $1\frac{1}{4}$  yard, can be the same fabric, or, split into  $\frac{3}{4}$  yard for background fabric and  $\frac{1}{2}$  yard contrasting accent fabric. (Sample in photo uses same fabric for both.)

Lightweight Interfacing: Four 18" x 5" rectangles

Lining Fabric: 1 yard muslin or other fabric for lining

Batting: 20" x 20" Square

Pillow Form: 18" Square for tight fit or 16" Square for loose fit

## A close-up photograph of a square pillow with a complex, multi-colored geometric pattern. The pattern consists of numerous small, triangular and rectangular blocks in various colors including red, green, yellow, blue, and white, arranged in a dense, repeating fashion. The pillow is resting on a dark, possibly leather, surface. The lighting is warm, highlighting the texture of the fabric and the intricate details of the design.

**Pleats:** Cut 52 - 1½" x 4" rectangles from scraps or cuts of fabrics for the pleats.

If you want to use different fabrics for the backside of the pleats and the spaces between the pleats, Cut 52 1½" x 4" rectangles for the backside of the pleats, and 56 1½" x 4" rectangles for the spaces between the pleats.

**Lindlee Smith:** I grew up in a home with quilts on every bed and every couch. If you came to my house you would see it's my goal to do the same. My roots are on the plains of northeastern Montana where I grew up on a farm and ranch. Now I live in Bozeman, Montana with my husband, 2 young kids, and dog. Besides filling my house with quilts and trying to keep up with my kids...a few of my favorite things are getting outside, growing food in our garden, discovering books and podcasts I want to recommend to everyone, baking, and eating baked goods. I've been designing modern star quilt patterns since 2020 and it brings me joy to see other people bring these patterns to life through their quilts. In addition to designing quilt patterns, I've also come to love helping fellow quilters be more confident in their quilting skills through sew a-longs and workshops. Lindlee will be releasing a new book in September and we will be one of the first groups to learn from her new book. Lindlee specializes in Modern Star Quilts. Website: <https://plainsandpine.com/> Check her out on Instagram: plainandpines She also has a Facebook page.

18

teacher and literacy coach before retiring in 2018. Retirement has allowed extra time to quilt, garden and visit her daughter and family in MN.

**Kathy Johnson:** Kathy started quilting in 1983. Little did she know where that first class would lead? Kathy loves teaching techniques that students have instant success with. Kathy has been published in several books and calendars and has her own pattern line. Check out her web page at [www.augustwindquilt designs.com](http://www.augustwindquilt designs.com). Contact Kathy at [quilted@restel.com](mailto:quilted@restel.com) or 701-828-3159.

**Kris Jacobson:** Kris started sewing in 4-H and acquired a Minor in Textiles and Clothing in College. In the late '80's she started getting interested in quilting. Kris loves the process of playing with colors and fabrics and likes to learn new things. She has won awards at local quilt shows and fairs and was juried into the Minnesota Quilt Show. There is always something new to try. She began teaching at Badlands Quilters Retreat in 1995. Kris retired in 2022 and is spending more time with the grand kids and quilting. They have one son and daughter-in-law and 5 grandchildren. You can contact Kris at [krisjacobson@yahoo.com](mailto:krisjacobson@yahoo.com) or call her at 701-279-5797.

**Teresa P Hecker:** Teresa began quilting after marrying and moving to an isolated ranch in the Badlands in 1997 and was introduced to quilting by her neighbor. Teresa loves new quilting gadgets, learning new quilting techniques, and teaching what she's learned to others. Teresa leans toward lots of color and modern quilt design. Now retired and living near Dickinson, she enjoys reading, sewing with her friends, and travelling for quilt retreats and shows.

**Kerry R. Thompson:** Kerry learned to sew from her mother when she was in grade school, but didn't begin quilting until 2019. She's been busy ever since exploring techniques and styles and loves learning new ways to cut things up just to put them back together. Kerry's day job as a paralegal is spent helping client's register and protect their trademarks. Her evenings are spent entertaining her husband and her five year old yellow lab that thinks she is still a six month old puppy. The rest of her time is spent sewing as much as she can, whenever she can. Contact Kerry at [krelphthompson@gmail.com](mailto:krelphthompson@gmail.com), 612-419-0793

**Denise Fried:** Denise began quilting in 2004 and quickly developed a passion for it. She started teaching a few years later, sharing her love for quilting and techniques with others. Denise enjoys creating quilts of all kinds and recently added a second longarm to her studio. She helps others finish their creations at her Sew Little Time Quilting studio during evenings and weekends.

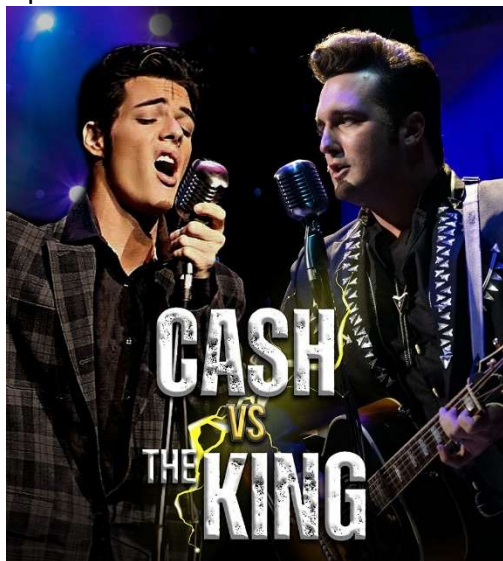
**Vickie Loh:** Vickie started quilting in the mid 1980's and has been teaching since 1995. She enjoys all aspects of quilting from choosing the fabrics to sewing on the binding. She has won awards at local quilt shows and the state fair, but the highlight of her quilting hobby was winning a trip to the 2001 Paducah, KY quilt show with her leap frog quilt, which featured hand appliqué and 3 dimensional flowers. Vickie lives on a ranch in southwestern ND where she also runs an architectural drafting business out of her home. She has two children and 8



grandchildren. Besides quilting, she enjoys gardening in the summer and deer hunting in the fall. Contact Vickie at [timvickieloh@ndsupernet.com](mailto:timvickieloh@ndsupernet.com) or 701-863-6761

### **Thursday Evening Show**

Optional entertainment for those who come Thursday evening.



#### **Cash vs. The King**

**Thursday, October 9<sup>th</sup>**

**7:30-Old Town Hall Theater**

**Cash vs. The King is back and even bigger than before. You can't help falling in love with back-to-back hits from two of the world's biggest rock 'n' roll legends. This new production sets the hits of two of music's biggest legends head-to-head.**

**A link for the Thursday Evening Show will be available at a later date for those that are interested in attending. The Guild has reserved 25 tickets. The link will be posted on the Facebook page and emailed to those registered for the Retreat.**